

April 16, 1871

01071

ST.

WESTMINSTER

ST.

CHAPEL

ST.

BROAD

James E. Cranston & Wife.

G. S. Owen & Jacob Futtler & Wife Heirs

G. S. Owen.

Mrs. Frances J. Vinton

Naron Town.

Francis Salmon

Plat of
Snow Street from Westminster to Broad St.
Showing Encroachments over Street line.

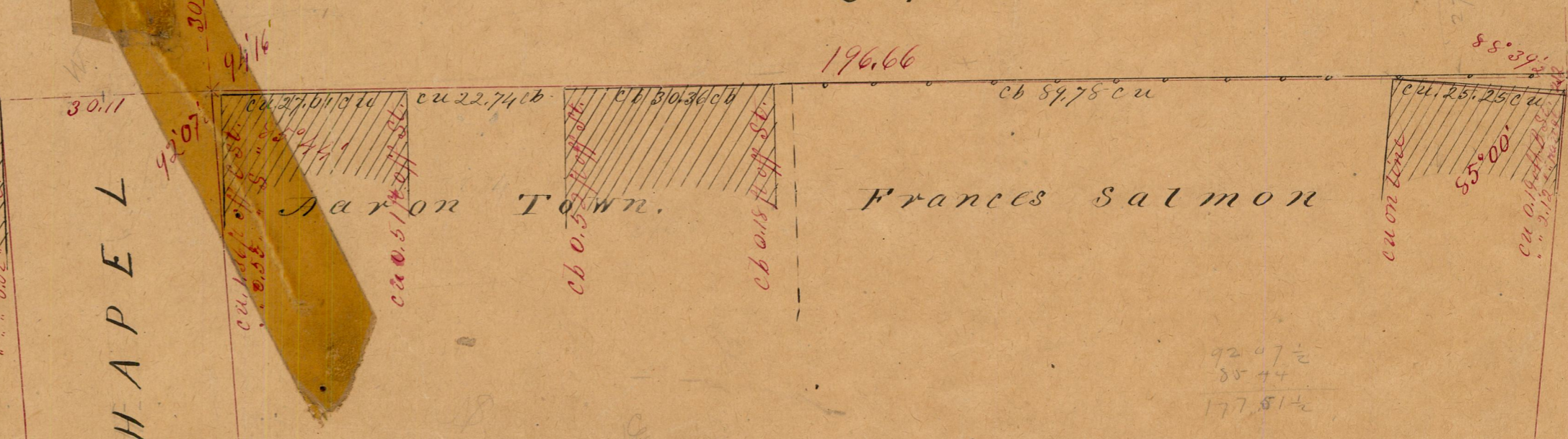
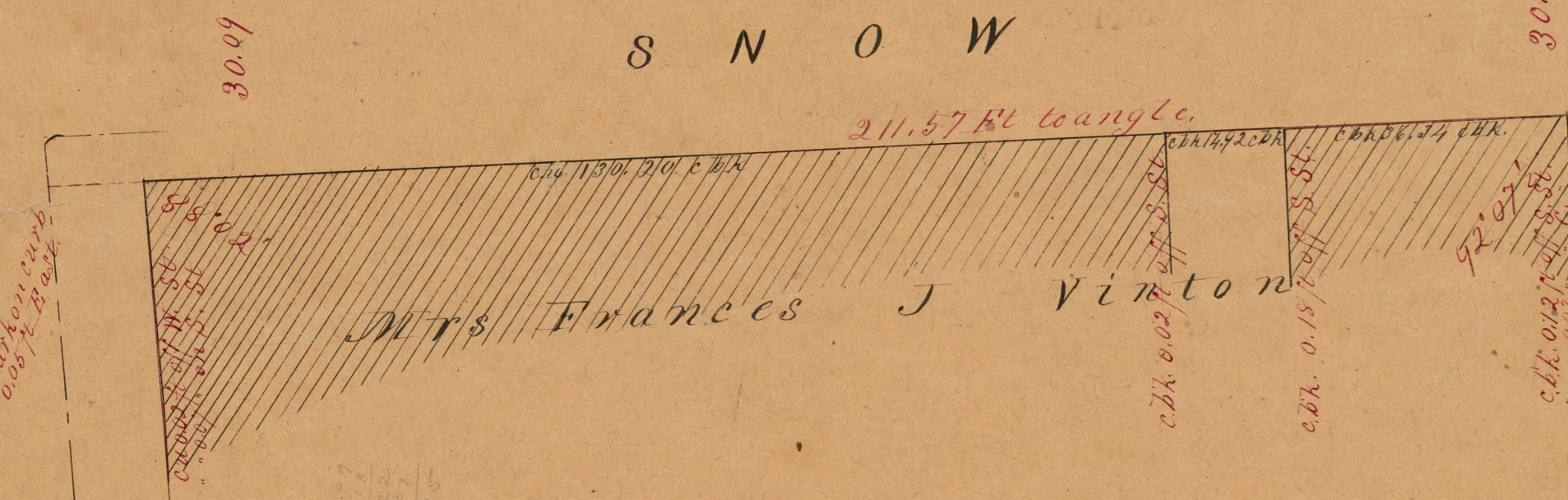
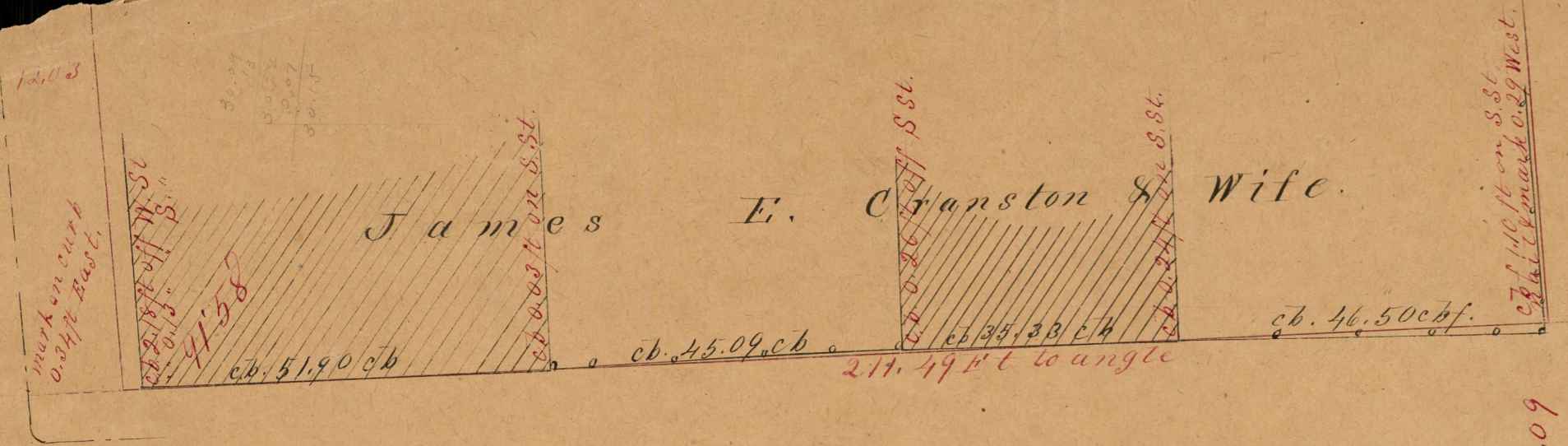
Surveyed & drawn April 16th 1871.

By C. E. Paine
City Engineer.

STREET LINES - PLANS.
City Engineer's Office.
No. 27.

NOT TO BE TAKEN FROM THE OFFICE.

OFFICE No. 911
DRAWER,, 95
SHEET,, A-8



690.04
27.67
2.40
30.904
8009
5022
30.10

92.07 1/2
88.44
177.51 1/2

92.07 30
88.39 30
180.46 00